

MAR 2024 | MONTHLY ISSUE

CSMPR Newsletter

UNVEILING THE LATEST UPDATES AND INSIGHTS

INSIDE THIS ISSUE: Special Highlight | Recently Published/Accepted Papers | Meeting New Members | Farewell to Outgoing Member | Past Event

Special Highlight

A team of CSMPR researchers had fruitful exchanges with collaborative hospitals and institutions in the Greater Bay Area on big data in healthcare, health economics, the latest eHR development, and many more. The trip was held on 17-20 March.



▲ Meeting Prof. Jie Jiang and his team from College of Pharmacy at Jinan University in Guangzhou



▲ Visiting The University of Hong Kong Shenzhen Hospital (HKU-SZH)



▲ Having discussions with the team at Centro Hospitalar Conde de São Januário in Macau

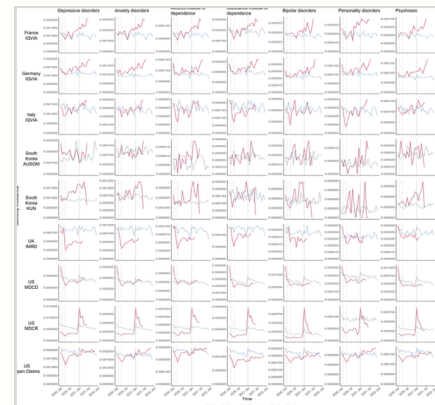
Recently Published/Accepted Papers

Yi Chai, Kenneth Man |

Epidemiology and Psychiatric Sciences

Incidence of mental health diagnoses during the COVID-19 pandemic: a multinational network study

([See publication here](#))



Yin Zhang, Eric Wan | *Clinical Oncology*

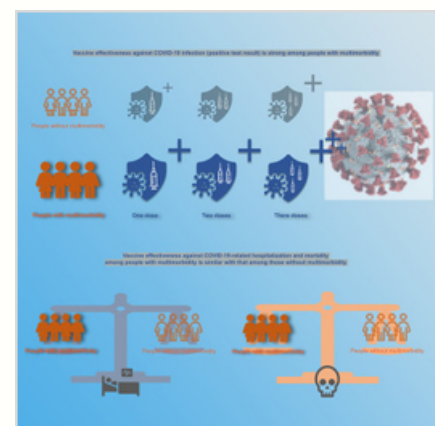
Decline in Cancer Diagnoses during the 'Zero COVID' Policy in Hong Kong: Indirect Spillover Impact of the COVID-19 Pandemic

([See publication here](#))

Francisco Lai, Vincent Yan, Eric Wan | *iScience*

COVID-19 vaccine effectiveness against the Omicron variant of SARS-CoV-2 in multimorbidity: a territory-wide case-control study

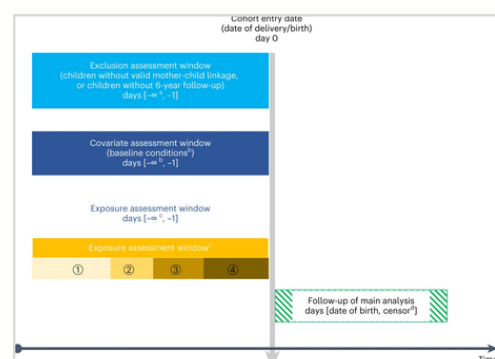
([See publication here](#))



Adrienne Chan, Gao Le | *Nature Medicine*

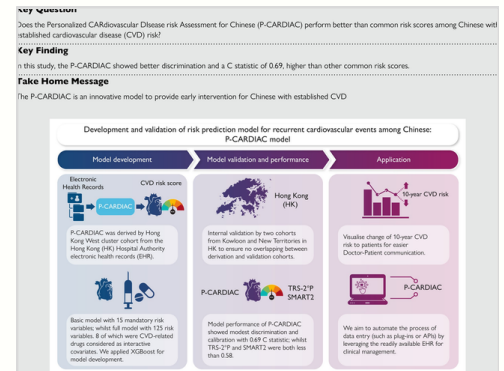
Maternal diabetes and risk of attention-deficit/hyperactivity disorder in offspring in a multinational cohort of 3.6 million mother-child pairs

([See publication here](#))



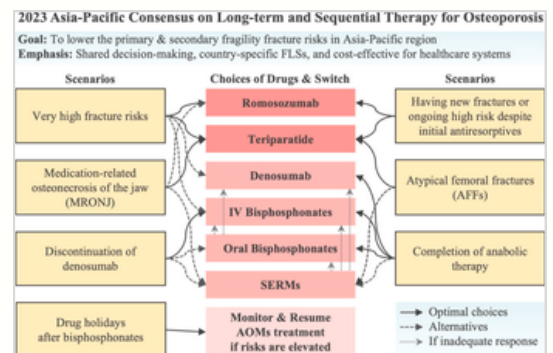
Development and validation of risk prediction model for recurrent cardiovascular events among Chinese: the Personalized CARdiovascular Disease risk Assessment for Chinese model

([See publication here](#))



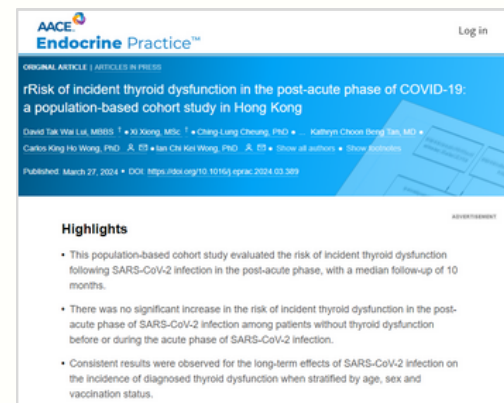
Asia-Pacific consensus on long-term and sequential therapy for osteoporosis

([See publication here](#))



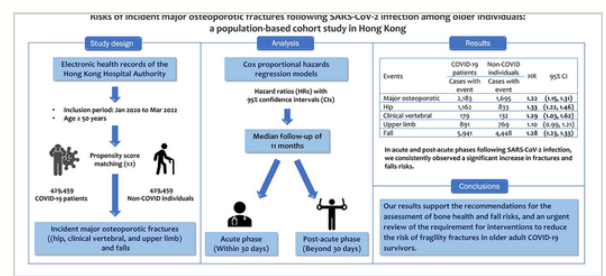
Risk of incident thyroid dysfunction in the post-acute phase of COVID-19: a population-based cohort study in Hong Kong

([See publication here](#))



Risks of incident major osteoporotic fractures following SARS-CoV-2 infection among older individuals: a population-based cohort study in Hong Kong

([See publication here](#))



Meeting New Member

A very warm welcome from the whole CSMPR team to our new member!



NICOLE WU

“Greetings! I'm Nicole Wu, stepping into Lydia's role at CSMPR. I have a passion for watching documentaries, sports, and animations. Music is my constant companion, and I love immersing myself in different languages. Thrilled to join the team and contribute!”

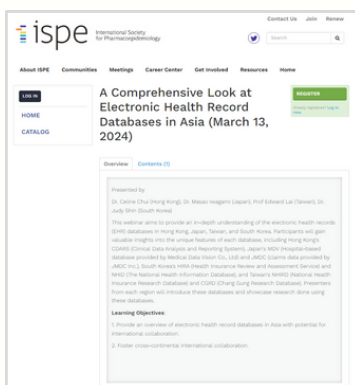
Farewell to Outgoing Member

Lydia Fung joined CSMPR four years ago, under the supervision of Prof. Esther Chan. She had been assisting in various research works and the daily operations of our centre. Lydia has decided to pursue further studies.

We extend our heartfelt appreciation to Lydia for her contributions and wish her all the best in her future endeavours!



Past Event



Prof. Celine Chui was invited to be one of the presenters at the webinar of International Society for Pharmacoepidemiology (ISPE). She presented on **“A Comprehensive Look at Electronic Health Record Databases in Asia”** on 13 March.

The webinar aimed to provide an overview of electronic health record (eHR) databases in Asia and foster cross-continental international collaboration using these respective databases.

About CSMPR

Centre for Safe Medication Practice and Research (CSMPR) was established in 2012 to foster research and development in medication safety in collaboration with local and international partners.

The mission of the CSMPR is to improve the health and quality of life of patients through interdisciplinary collaborative research that addresses questions central to medication safety. We focus on delivering innovative results that optimise the safe and effective use of medications. Drawing on the combined expertise of specialist resources from the Queen Mary Hospital (QMH), The University of Hong Kong (HKU) and other collaborative partners, the CSMPR provides a world-renowned platform for the training of health care professionals, patients and the general public on the safe and effective use of medications.

Our aim is to deliver high quality research with results relevant and applicable to health in real world settings, thus optimising and promoting the safe and effective use of medicine in Asia and beyond.

