



## Polyclonal Antibody against human Retinol-binding protein 4

**Catalog Number:** 161002

**Size:** 100 mg

**Host:** Rabbit

### Introduction

Delivers retinol from the liver stores to the peripheral tissues. In plasma, the RBP-retinol complex interacts with transthyretin, this prevents its loss by filtration through the kidney glomeruli.

### Immunogen:

Recombinant full-length human Retinol-binding protein 4 (RBP4) expressed in *E. coli*.

### Preparation:

Rabbit IgG was purified by protein G affinity chromatography.

### Specificity:

The antibody detects human RBP4.

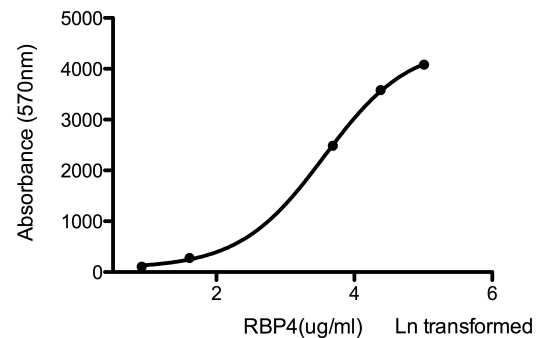
**Form:** Liquid

**Storage buffer:** PBS

**Storage instructions:** Shipped at 4°C. Store at +4°C short term (1-2 weeks). Store at -20°C long term. Avoid freeze / thaw cycle.

### Applications:

**Turbidimetric Immunoassay** - This antibody can be used in turbidimetric immunoassay to detect human RBP4.



Turbidimetric immunoassay of RBP4  
(the figure is from Prof.Xu's lab, HKU)