

Recombinant Mouse Lipocalin 2

Type:	Recombinant	Cat. No.:	42050
Tag:	His	Size:	0.1 mg
Source:	E.Coli	Purity:	>95%
Other names:	24p3; MSFI; NGAL; LCN2	Species:	Mouse

Introduction to the Molecule

Lipocalin-2(LCN2), also known as neutrophil gelatinase-associated lipocalin (NGAL), 24p3, siderocalin, or neutrophil lipocalin (NL), is a secretory glycoprotein which is expressed in liver, lung, kidney, adipocytes, activated neutrophils, and macrophages. LCN2 appears to be upregulated in the case of information and infection conditions. Several reports suggest that LCN2 may represent a sensitive biomarker for various renal injuries and somehow may be involved in the pathophysiological process of some chronic renal diseases. LCN2 is also high expressed under high fat diet and obese background especially in adipose tissue and is closely associated with obesity, insulin resistance, and hyperglycemia in humans.

Description

Total 208AA. Mw: 24.2kDa (calculated). N-terminal His-tag and TEV cleavage site, 28 extra AA (highlighted).

Amino Acid Sequence

MSYYHHHHHH DYDIPTTENL YFQGAMGS QDSTQNLIPA PSLLTVP LQP
DFRSDQFRGR WYVVGLAGNA VQKKTEGSFT MYSTIYELQE NNSYNVTSIL
VRDQDQGCYR WIRTFVPSSR AGQFTLGNMH RYPQVQSYNV QVATTDYNQF
AMVFFRKTSE NKQYFKITLY GRTKELSP EL KERFTRFAKS LGLKDDNII F
SVPTDQCIDN

Formulation

Lyophilized in 1 mg/mL in PBS.

Reconstitution

Add deionized water to prepare a working stock solution of approximately 1 mg/mL and let the lyophilized pellet dissolve completely.

Storage

Store lyophilized protein at -20°C . Aliquot reconstituted protein and store at -80°C . Avoid repeated freezing /thawing cycles.

Applications

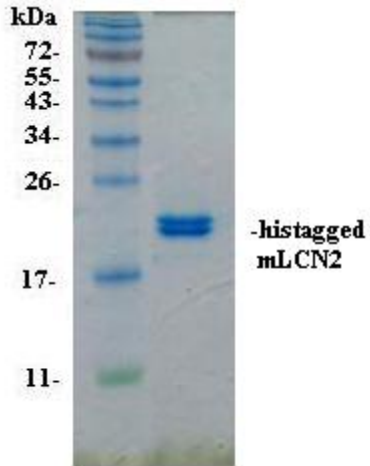
ELISA and Western blotting.

Quality Control Test

BCA to determine quantity of the protein.

SDS PAGE to determine purity of the protein.

SDS-PAGE gel



L8-37, Laboratory Block, The University of Hong Kong, 21 Sassoon Road, Hong Kong

Tel: ++852-2819-9743

Fax: ++852-2816-2095

E-mail: antibody@hku.hk

Web site: www.antibody.hku.hk