

## Polyclonal Antibody against Mouse Lipocalin 2

**Catalog Number:** 12050

**Size:** 100 µg

**Host:** Rabbit

**Isotype/Preparation:**

Rabbit specific IgG was purified by mouse LCN2 affinity chromatography.

**Immunogen:**

Recombinant full-length mouse LCN2 expressed in E.coli.

**Specificity:**

The antibody detects mouse LCN2.

**Formulation:**

Solution in PBS

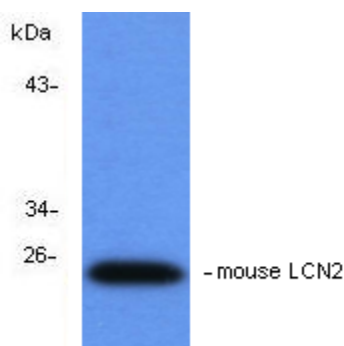
**Storage:**

Store at -20°C. For long-term storage, aliquot and freeze at -70°C. Avoid repeated freeze/thaw cycles.

**Application/Usage:**

**Western blot** - This antibody can be used as primary antibody to detect mouse LCN2.

**ELISA** - This antibody can be used in ELISA with the appropriate secondary reagents to detect mouse LCN2.



*Western blot analysis of LCN2 in 20 µg mouse aorta tissue lysate using anti-mouse LCN2 followed by goat anti-rabbit antibody.*

### Introduction

Lipocalin-2(LCN2), also known as neutrophil gelatinase-associated lipocalin (NGAL), 24p3, siderocalin, or neutrophil lipocalin (NL), is a secretory glycoprotein which is expressed in liver, lung, kidney, adipocytes, activated neutrophils, and macrophages. LCN2 appears to be upregulated in the case of inflammation and infection conditions. Several reports suggest that LCN2 may represent a sensitive biomarker for various renal injuries and somehow may be involved in the pathophysiological process of some chronic renal diseases. LCN2 is also high expressed under high fat diet and obese background especially in adipose tissue and is closely associated with obesity, insulin resistance, and hyperglycemia in humans.